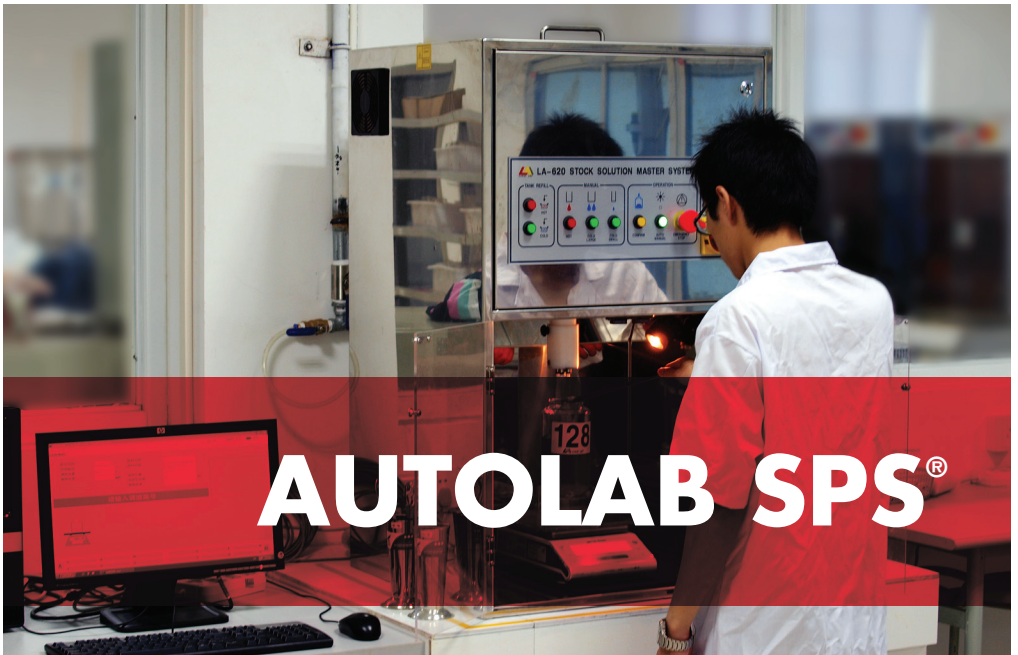


# Solution Preparation System



## **Stable, Accurate and Consistent Solutions**

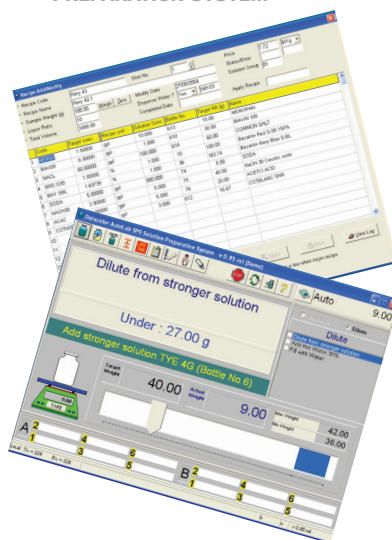
- Automatic making of solutions
- Precise and repeatable dye solutions
- Fast throughput
- Ensures solutions are made consistently (correct water temperature, correct method of mixing, etc)
- Removal of human error

# AUTOLAB SPS<sup>®</sup> SOLUTION PREPARATION SYSTEM

In addition to the AUTOLAB TF<sup>®</sup> range of dispensers, Datacolor also provides a range of automated solution preparation systems, AUTOLAB SPS, to ensure that dye solutions used in the lab and on the dispenser are prepared accurately and consistently.

## FEATURES

- Hot water tank, 15 litre capacity with automatic refill.
- Automatic water heater with programmable temperature controller.
- Cold water tank, 5 litre capacity with automatic refill.
- 2 large cold water dispense valves.
- 1 large hot water dispense valve.
- 1 small cold water dispense valve.
- Additional manual controls for all dispense valves.
- Precise electronic balance with 0.01g or 0.001g readability (SPS/SPS-X).
- Separate 6-position mixer station for mixing of solutions during preparation.



Autolab v2.0 solution preparation software, intuitive easy to follow menus provide all needed information to the operator in a single view.

## FEATURES COMPARISON

	AUTOLAB SPS	AUTOLAB SPS-X
Number of large cold water valves	2	2
Number of small cold water valves	1	1
Number of hot water valves	1	1
Moving dispense head	Manual	Manual
Number of make solution mixing positions	6	6
Hot water tank capacity	15 L	15 L
Cold water tank capacity	5 L	5 L
Readability of scale	± 0.01 g	± 0.001 g
Speed of water dispense (1 litre)	30 sec	30 sec
Accuracy of water dispense	± 0.1 g	± 0.1 g
Dispense range	0-4000g	0-4000g
Power Voltage	220 V	220 V
Power Frequency	50/60 Hz	50/60 Hz

WORK FLOW	Design	Photo	Cosmetics	Packaging	Ink	Home Entertainment	Automotive	Plastics	Paint & Coatings	Textile	Retail Paint
Create/Design											
Specify											
Formulate and Produce										■	
Quality Control										■	

For more information, please visit [www.datacolor.com](http://www.datacolor.com)

### RECOMMENDED SYSTEM REQUIREMENTS

Pentium 4 at 2.4 GHz, 512MB RAM, 40GB HDD, 17" Monitor at 1024x768 resolution, 52X CD-ROM, Network Card, (1) RS-232 Serial, English PS/2 Keyboard, Windows<sup>®</sup> XP Home, Pro, Windows Vista, Windows 7.

Committed to Excellence. Dedicated to Quality. Certified to ISO 9001:2000 in Manufacturing Centers Worldwide. ©2010 Datacolor Inc. Datacolor and other Datacolor product trademarks are the property of Datacolor Inc. Windows is either a registered trademark of Microsoft Corporation in the United States and/or other countries.

**datacolor**